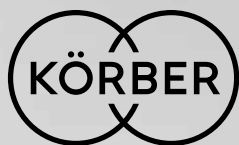
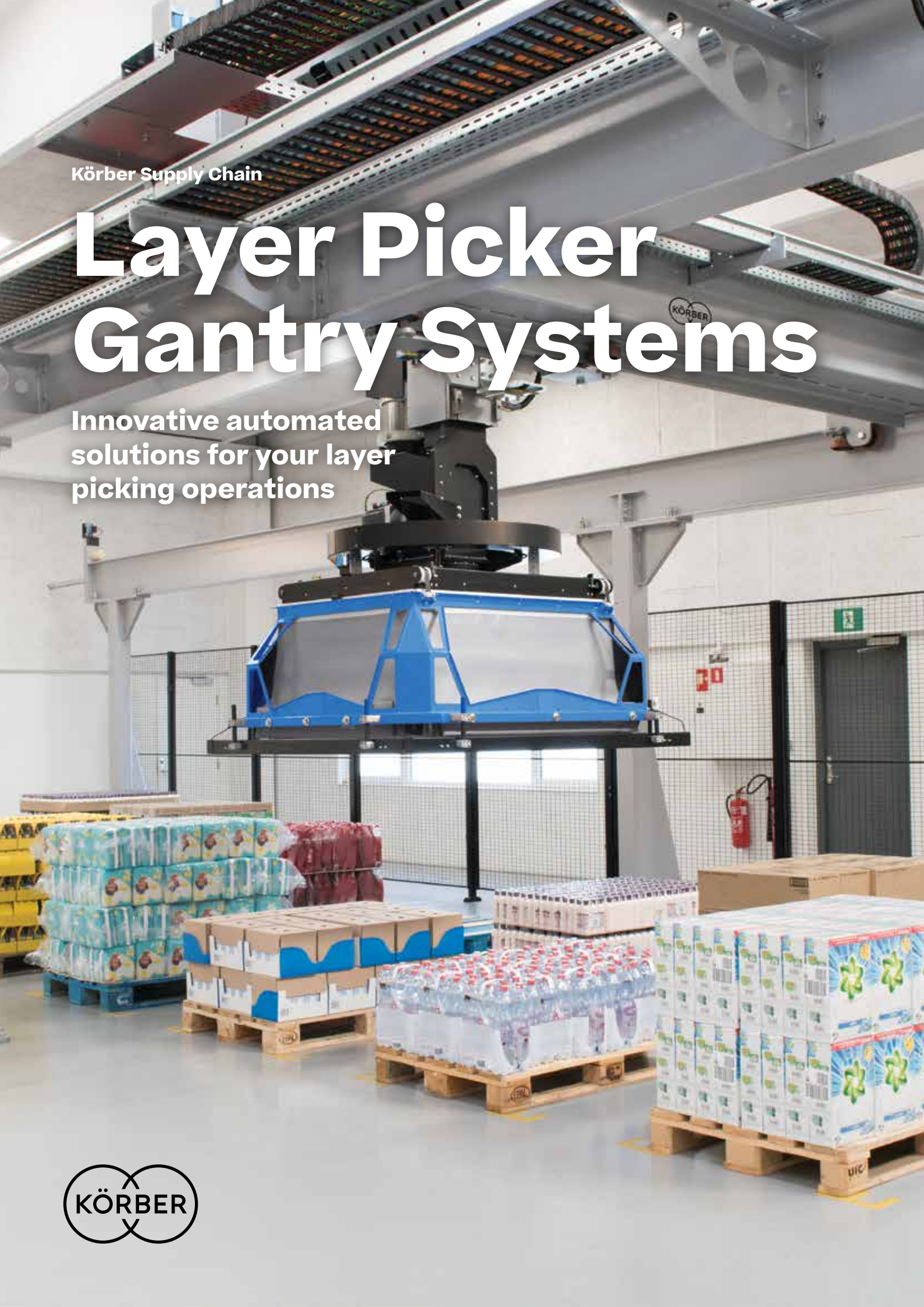


Körber Supply Chain

Layer Picker Gantry Systems

Innovative automated
solutions for your layer
picking operations



Revolutionizing your warehouse processes

Standalone, turnkey supply chain solutions tailored to deliver high-performance layer picking for large fast moving consumer goods (FMCG) producers and 3PL providers.

The K.Handle Layer Picker is the industry standard for both de-palletizing and pallet-to-pallet picking

With Körber Layer Picker Gantry systems, you can combine high-bay storage, conveyors, cranes and a warehouse control system with our market-leading Layer Picker technology.

Order picking and mixed pallet creation

Layer Picker Gantry systems offer fully automated layer picking, allowing you to create mixed-layer customer pallets and de-palletizing layers for case descrambling. This significantly increases production output while reducing the need for manual labor.

Automated picking of layers

Our Layer Picker is at the heart of Layer Picker Gantry systems. Using unmatched, proven technology, based on a unique combination of suction and clamping, it can even pick layers with voids. It adapts to and handles almost any item, including fragile cases and heavy layers of crates.

Scalable solution

The systems can be scaled to suit layer picking needs, from a small volume of layers with just a few SKUs up to +10,000 layers with +5,000 SKUs per day.

Features and benefits

- **Reduced need for manual labor**
- **High-speed layer picking and accuracy**
- **Vastly reduced product damages**
- **Efficient footprint utilizing warehouse space**
- **Also operates in deep freeze environments**

Expert partner

Körber's in-depth knowledge of layer picker technology means we can channel this knowledge into design, sizing, and execution of state-of-the-art layer picker projects.

Functionality

Our turnkey Layer Picker Gantry systems are ideal for fulfilling complex orders with unmatched efficiency.

- Combine high-bay storages, conveyors and our Warehouse Control System (WCS) with the market-leading Layer Picker technology
- Support mixed pallets in an automated, software-driven process
- Automatically pick layers for rainbow and sandwich pallets, replacing the need for manual full-layer picking
- Realize from 1,000–10,000 layers per day
- Individually configure to your needs with standardized modules to create customized solutions
- Proprietary WCS software can be integrated into any warehouse software environment
- Can be expanded to include single case picking, load sequencing and other types of automation

“The team behind the Layer Picker is very professional, and this has given us even more confidence in the solution, which delivered outstanding results from the first push of the button.”

Stuart Alldrige, Senior Project Implementation Manager
Kraft-Heinz UK



The Layer Picker handles an extremely large variety of goods including complex items normally deemed unfit for automated handling.



Picks up to
98%
of all food
retail products

Layer Picker Gantry Systems

Operates also in
-28°C
-19°F



This standalone Layer Picker Gantry system with integrated AS/RS storage is capable of handling up to 10,000 picks per day.

Customized solutions

Layer Picker Gantry systems are centered around the Layer Picker models and technology, customized to seamlessly integrate conveyor technology, AS/RS cranes, smart software and other key technology required to meet your needs.

Körber Layer Picker Gantry Systems

Developed in collaboration with our customers, from idea generation to the final implementation.



This standalone Layer Picker system, with one Layer Picker head, handles up to 2,000 picks per day.

This standalone Layer Picker system, with two Layer Picker heads, handles up to 4,000 picks per day.

Customization

Customizing your solution:

- Operative profitability from 1,000 layer picks per day
- Focus on your individual business case
- Customer order data, material flow and production requirements drive the design criteria
- Visual simulation, based on real customer order data, can be used to confirm the design
- Highly standardized and modular solutions to support almost any set-up and need

Technology

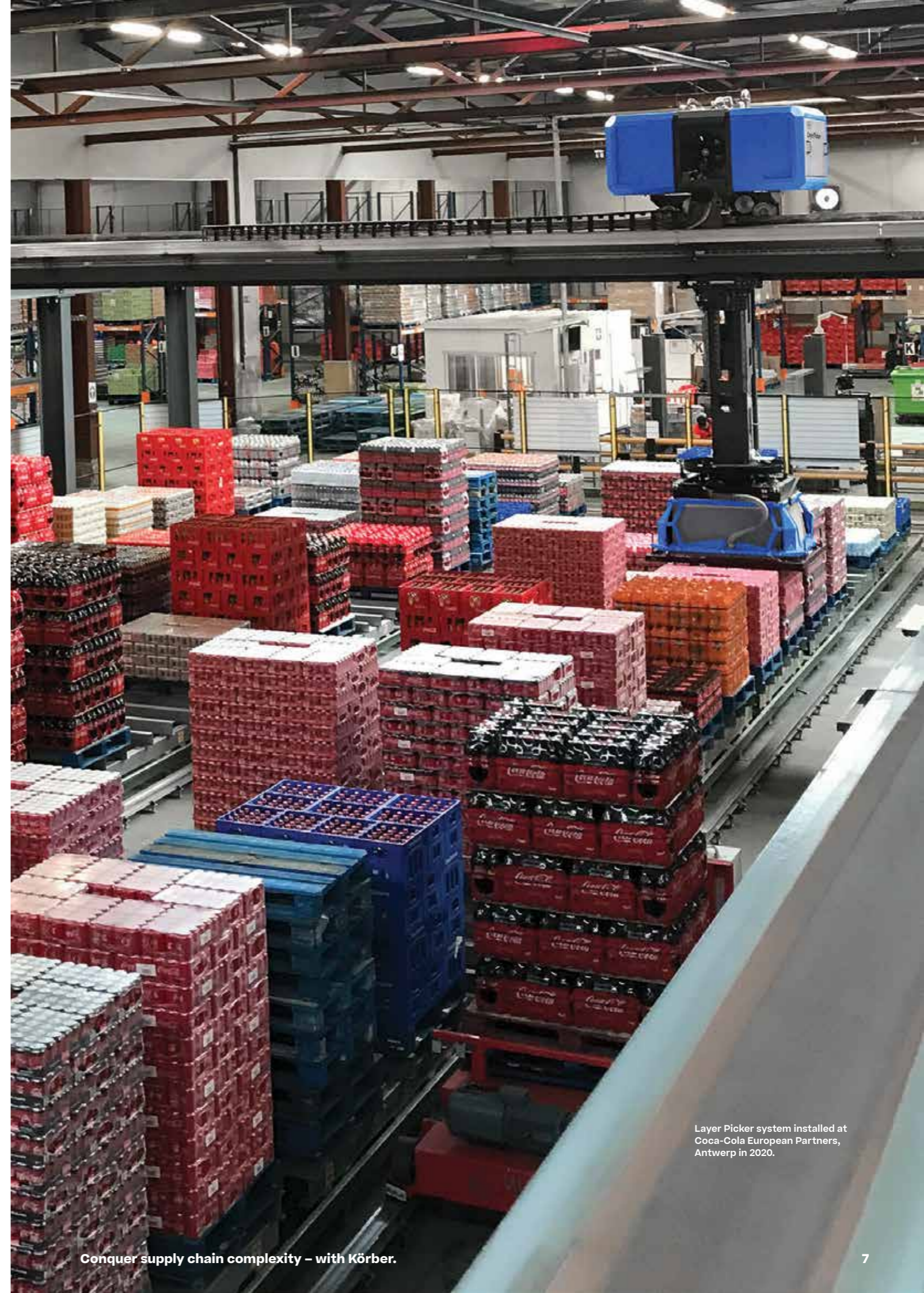
Unmatched performance for your warehouse:

- The most versatile solution on the market
- Unmatched picking technology combining suction and clamping
- More than 700 Layer Picker installations globally
- Industry standard for de-palletizing and pallet-to-pallet picking
- Picks both single or multiple layers and layers with voids
- Operates in temperature ranges from -28°C to +40°C (-19°F to +104°F)

Test your products

Visit our showroom and customer test center in Denmark to see our Layer Picker solutions in action. Here, they are available for product testing, so you can verify if a Layer Picker is the right solution for you.

Contact us for more information!



Layer Picker system installed at Coca-Cola European Partners, Antwerp in 2020.

Layer Picker AMR

Our Layer Picker AMR solution combines Layer Picker and AMRs into one reliable and efficient system. It is highly compact and modular, making it easy to deploy in almost any warehouse. It is a very flexible and high-performance solution that can help you turn supply chain complexity into opportunity for your customers.

Key benefits

- Highly flexible, scalable automation
- Seamless integration into existing systems
- Compact and brownfield friendly
- A complete turnkey solution with low-cost entry

Specifications

- Up to 1200 kg payload
- Can be adapted to carry any pallet format
- Mono gantry with 10 pallet positions and AMRs results in throughput of up to 120 cycles/hour
- Dual pallet movement for high utilization of the Layer Picker Mono Gantry
- High-speed handover station for all pallet types and sizes

Up to **25%** more efficient than conveyor-based layer picker systems



Körber's Layer Picker AMR: the perfect solution to increase logistics flexibility

Digital enablement and AI-driven technology

Optimal machine performance and output are our highest priorities. Our systems are created to work with proprietary software for optimal performance to ensure you can fully benefit from our solutions.

We offer a line of digital products with cutting-edge technology, taking the machinery into the future. These include predictive maintenance, digital AI-operator, alarms, Pick Program Select, Slip Sheet Detect, and Drop Prediction.

Our digital enabled products are based on the "Operator Eye" – an AI-powered, efficiency-enhancing warehouse solution. It features embedded cameras to capture operations during the picking process, which the AI then uses to learn how to solve any issues, effectively improving uptime and future-proofing operations.

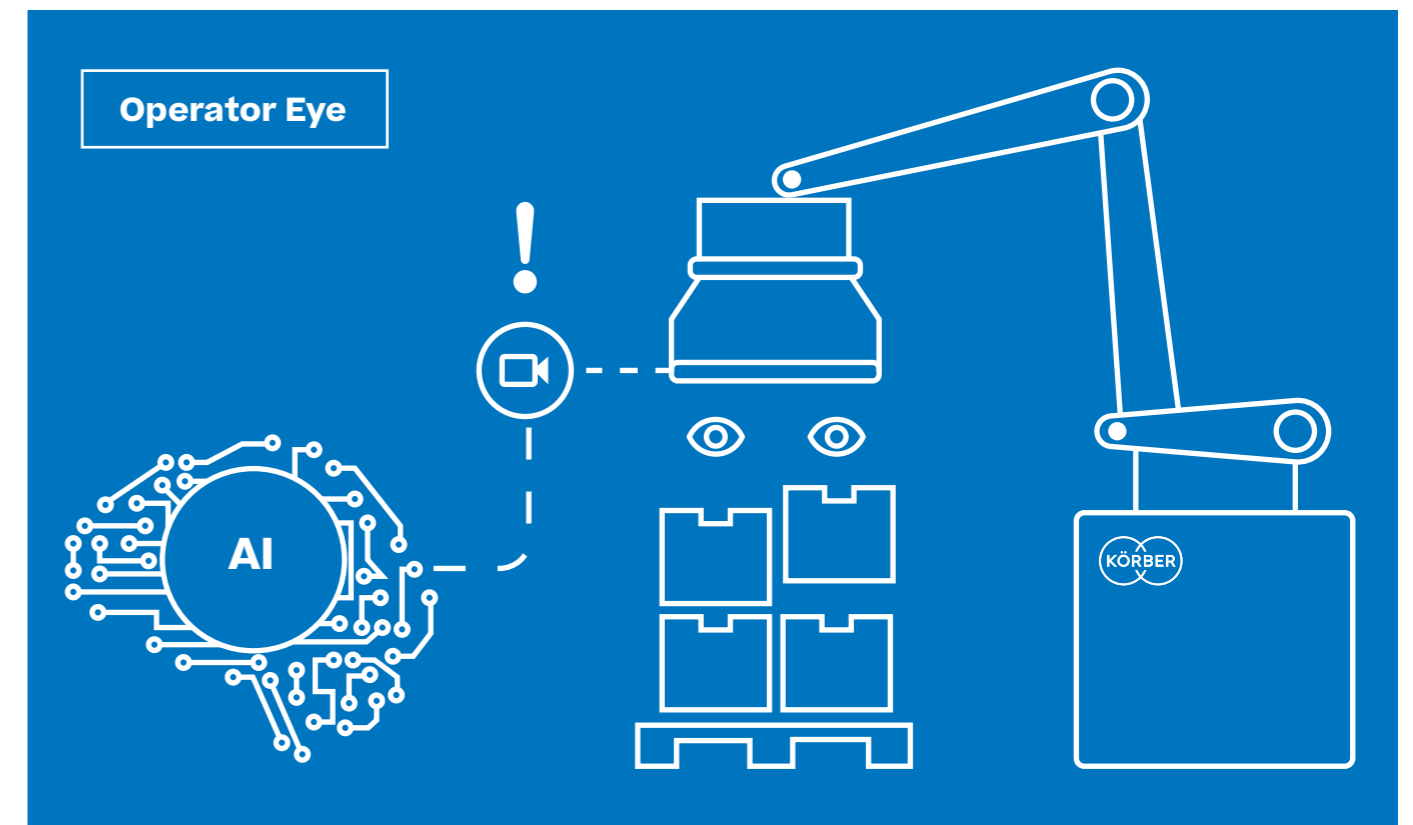
Proven to increase uptime by up to **12%**

Key benefits

- Incrementally learns operator behavior and reduces manual intervention
- Detects slip sheet issues during palletizing and depalletizing
- Image tracking for visual quality monitoring and performance optimization

Specifications

- Four cameras, powerful IPC, and cutting-edge AI technology for instant camera recognition
- Becomes autonomous within one month at 1200 picks per day
- High-performance Siemens Edge device for ample addition of future functionalities
- Connected via a secured Siemens MindSphere Cloud solution



Depalletizing technology – pallet to tray

In combination with the Layer Picker, the downstream equipment automatically transforms full pallets into single cases on trays without any need for manual intervention.

Key functions

- Removal of slipsheets and interlayer sheets
- Layers separated into single cases
- Turning and tilting of cases into any orientation
- Outfeed of single cases, directly on the conveyor, or loaded onto a tray with 1 to 6 cases on each tray

Key solutions

- Stripper (slipsheet removal) unit
- Descrambling (singulation) unit
- Box turner and tilter
- Pattern mix
- Tray-loader
- Tray de-stacker

100%

automated pallet-to-tray process

Key benefits

- Handles a broader range of packaging types than any other solution
- Seamless integration with the layer picker
- Automated turnkey solution with full tracking of data
- Damage-free handling with high throughput
- Combines hardware with digitization concept
- AI-enabled technology
- Future proof

Specifications

- Up to 3600 products/hour depending on the set-up
- Multiple tray sizes
- Product dimensions from 80 × 80 to 450 × 650 mm
- Parallel, mixed, or serial loading (up to 6 products in one tray)
- Pallet data combined with tray data



Any questions?

Need more information about our Layer Picker systems and our services?

For any enquiry, or to book a demonstration and testing, we are at your disposal with our comprehensive know-how.

We would be happy to also help you reduce complexity.

Get in touch!

Regional offices

System Integration & Automation

Central Eastern Europe

Körber Supply Chain Automation GmbH
Daimlerstraße 40
74211 Leingarten
GERMANY

+49 7131 9059-0
info.sc.lei@koerber-supplychain.com

North-West Europe

Körber Supply Chain DK A/S
Industrivej 8
9510 Arden
DENMARK

+45 99 400000
info.sc.ard@koerber-supplychain.com

Körber Supply Chain GB Ltd
Harborough Innovation Centre
Airfield Business Park
Market Harborough, LE16 7WB
UNITED KINGDOM

+44 7921 741078
info.sc.uk@koerber.com

South-West Europe

Körber Supply Chain PT S.A.
Rua da Lionesa, 446,
Espaço C38
4465-671 Leça do Balio
PORTUGAL

+351 222 463 000
info.sc.por@koerber.com

Asia-Pacific

Godrej Koerber Supply Chain Limited
701, A wing, Reliable Tech Park, Off
Thane Belapur road,
Airoli, Navi Mumbai 400708
INDIA

+91 22 6139 3800
info@godrejkoerber.com

Koerber Supply Chain SG Pte Ltd

31 Kaki Bukit Road 3, #06-14, Techlink
Building
SINGAPORE 417818

+65 6841 7073
info.sc.sgp@koerber-supplychain.com

North America

Körber Supply Chain NA, LLC
500 Northridge Road, Suite 330
Atlanta, GA 30350
USA

+1 412 559-0093
ksc-na.sc@koerber-supplychain.com

Information herein is subject to change without notice.

