

Körber Supply Chain

Master Class Series

Today's Class:
Post-COVID safety measures for
employees



Speakers



Thomas Goldsby

Professor

James A. Haslam, II Chair of Logistics
The University of Tennessee Knoxville



Michel Perez-Guzman

Director of Professional Services
Körber Supply Chain

Supply Chain Master Class: Disruption Mitigation

Why are we here? What are we trying to accomplish?

Class Schedule:

- October 15: Building a resilient supply chain
- October 20: Post-COVID supply chains: lessons learned
- October 22: Augmenting the workforce with AMR
- October 27: Post-COVID safety measures for employees

Master Class Series – On-Demand

- *Addressing Labor Challenges*
- *Cold Storage Trends*
- *Warehouse Technology Excellence*
- *Workplace Efficiencies and Safety*
- *SAP Supply Chain Excellence*

Housekeeping



All phone lines are muted

Recording of today's class and slides will be emailed to you within 48 hours

Questions:

- Ask questions during today's class in the GoToWebinar Questions window
- Questions will be addressed at the end of today's class or we will follow up with questions via email after class

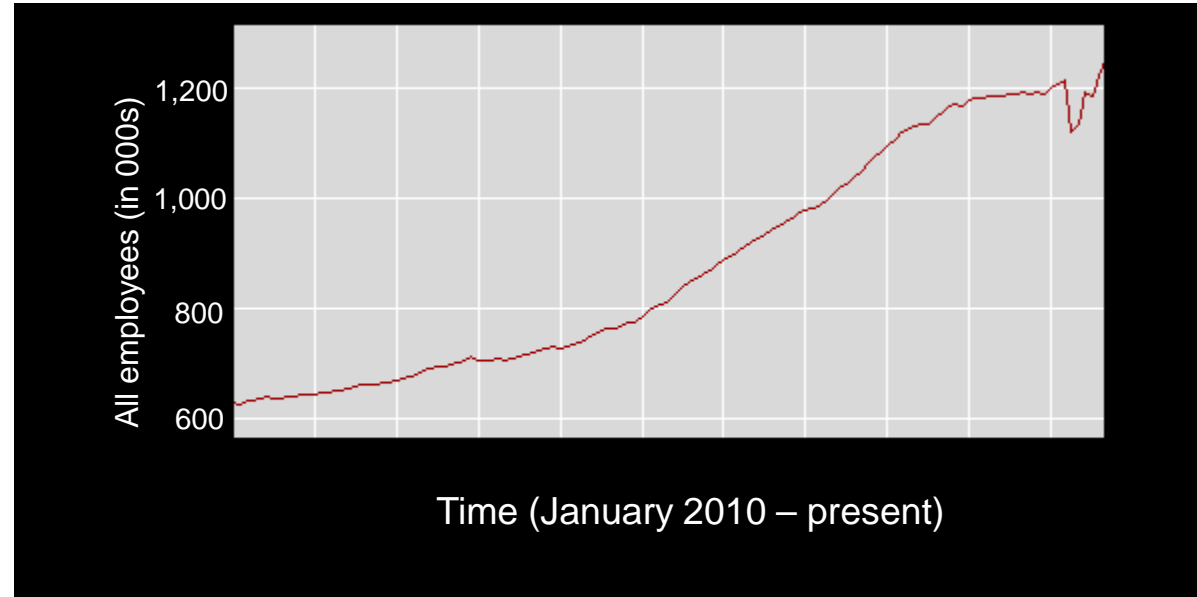
Handout: 15 Ways to Improve Warehouse Safety

Poll Question: What types of productivity and safety projects are you prioritizing since COVID?

Warehouse Safety: Facts and Figures



- The Transportation & Warehousing sector trails only First-Responders (firefighters and police) in terms of occupational workplace injuries.¹
- The fatal injury rate for the warehousing industry is higher than the national average for all industries, at about five injuries per 100 workers per year.²
- Forklift operations are the most frequently cited OSHA violation.²
- The number of people entering the warehouse labor force continues to rise, and average experience is on the decline.³



The number of U.S. warehouse workers has virtually doubled from 629,000 in January 2010 to 1,254,000 in September 2020.

Sources:

¹ National Safety Council

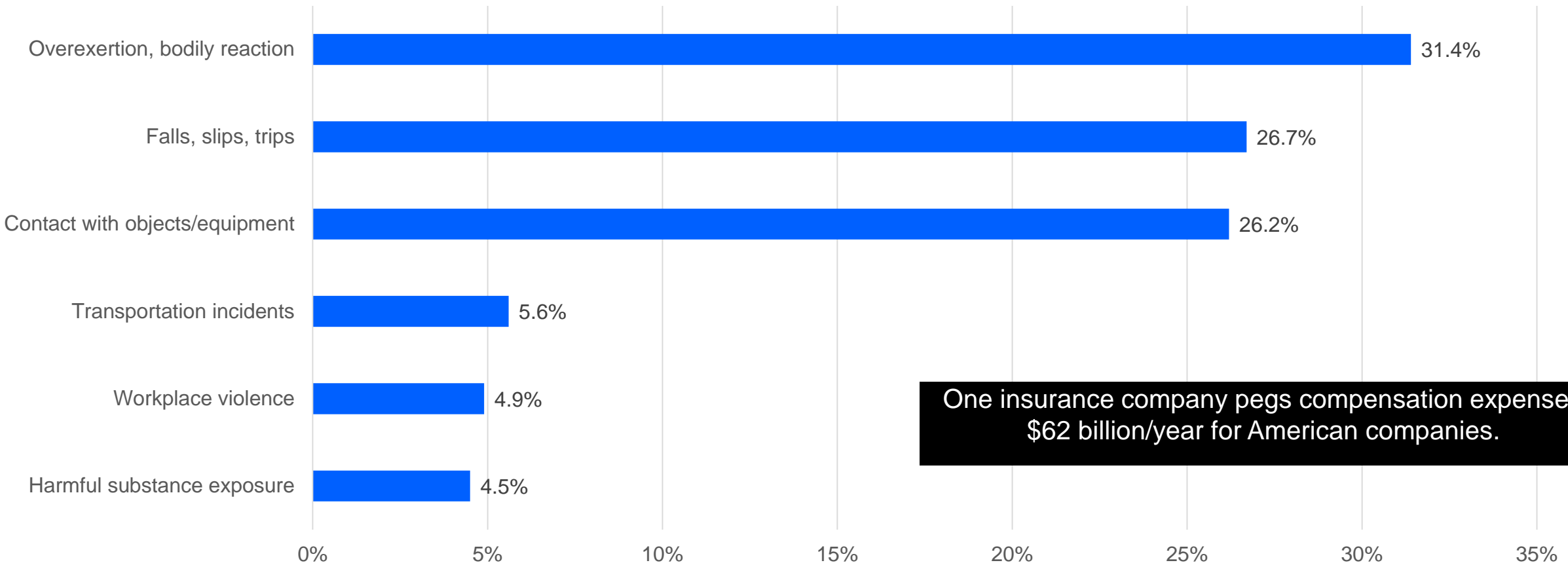
² Occupational Safety and Health Administration

³ U.S. Bureau of Labor Statistics

Warehouse Injuries: Cause & Effect



Top Warehouse Workplace Injuries/Sources



One insurance company pegs compensation expense at \$62 billion/year for American companies.

Current Challenges

Staffing

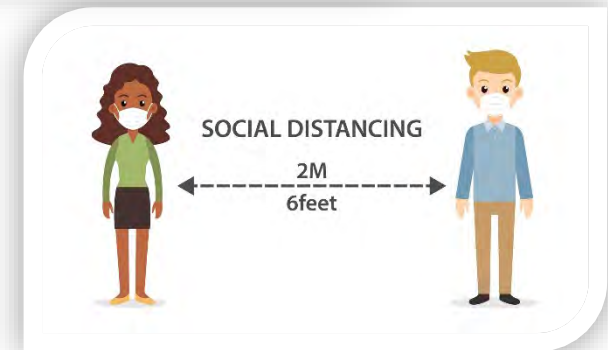
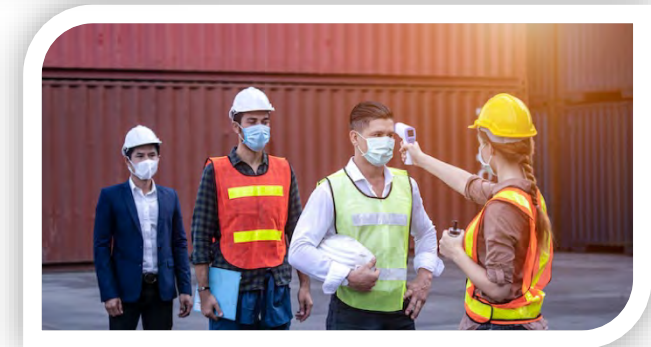
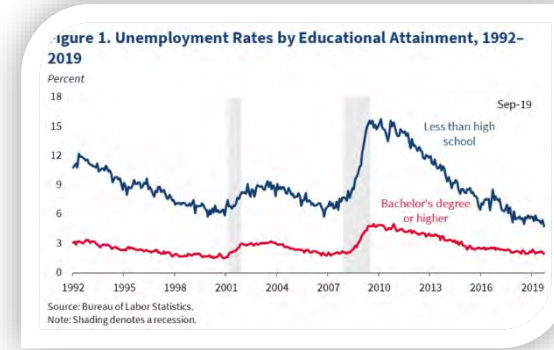
- Low unemployment rates = labor challenges
- Increased use of sick time due to COVID
- Lack of symptoms puts others at risk
- High safety standards within the supply chain

Preventive Measures

- Social Distancing
- Sanitizing

Handling Outbreaks

- Contact Tracing



Technology - AMR

Minimize user interaction

- Users stay in a single area and have the bots come to them
- Less employees per shift

Disinfecting

- Automated disinfecting of high-traffic areas
- Chemical or UV-light based

Post COVID benefits

- Increased productivity
- Reduced accidents due to worker fatigue



Technology - Voice



“Long work hours, working at night, and rotating shifts are some factors that can lead to increased risks of errors, incidents, accidents and injuries.”

– Managing Workplace Fatigue, National Safety Council (2019)

Hands-free data validation/collection

- helps minimize product handling

Individual headsets for sanitary purposes

Less side conversations

- crucial in an era of social distancing

Improved focus

- reduces worker injuries and product damage

Increased productivity

- Average 10% - 25%

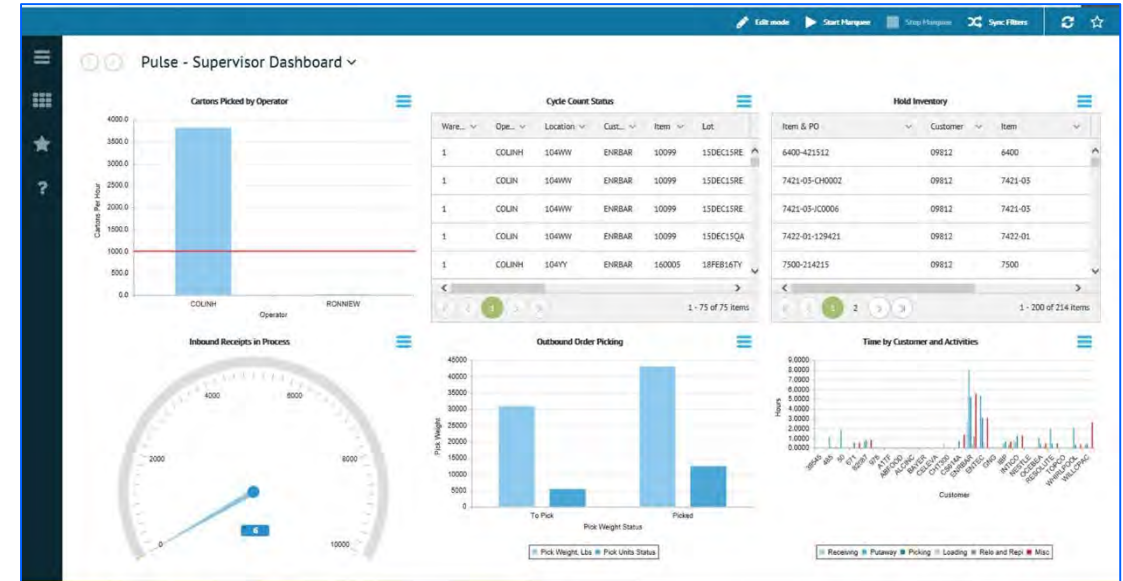
Reporting and Visibility



Contact Tracing reports

- Transactions by employees
- Locations frequently visited
- Equipment/devices used

Supervisors can always benefit from additional reporting and visibility – even in a post-COVID environment!



Everyone is going through this – from CEOs down to folks out on the floor

Promoting a Culture of Safety and Cleanliness

- Signage reminding everyone to wash hands, use tissues, etc.
- Hand sanitizer readily available
- Stay home if not feeling well!

Review employee benefits

- Ensure everyone is comfortable using sick time when needed

“More than 70% of U.S. companies surveyed by law firm Blank Rome’s COVID-19 Task Force did not have a pre-existing pandemic risk management plan in place when the virus hit.”

-Employer Response to COVID-19, Risk Management Magazine (2020)

Questions & Discussion