

Körber Supply Chain

Master Class Series

Today's Class:

Migrating from SAP WM to SAP EWM –
Key considerations for your project



Speakers



Thomas Goldsby

Professor

James A. Haslam, II Chair of Logistics
The University of Tennessee Knoxville



Jarrett Leesch

Senior Vice President of
International Business Development
at Körber Supply Chain

Supply Chain Master Class: SAP Supply Chain Excellence

Why are we here? What are we trying to accomplish?

Class Schedule:

- September 29: SAP Supply Chain Logistics: Best Practices for Implementation
- October 1: Migrating from SAP WM to SAP EWM – key considerations for your project
- October 6: SAP EWM in the Cloud – how to pick the best deployment option for your business
- October 8: Automating your Warehouse with SAP EWM and SAP MFS
- October 13: Enhancing SAP supply chain logistics with voice solutions

Master Class Series – On-Demand

- *Addressing Labor Challenges*
- *Cold Storage Trends*
- *Warehouse Technology Excellence*
- *Workplace Efficiencies and Safety*

Housekeeping

- All phone lines are muted
- Recording of today's class and slides will be emailed to you within 48 hours

Questions:

- Ask questions during today's class in the GoToWebinar Questions window
- Questions will be addressed at the end of today's class or we will follow up with questions via email after class

Handout: SAP Extended Warehouse Management (EWM) brochure

Warehouse & Distribution Operations Then and Now...

2000's



Full Pallets In/Out

2020's



Break Down the Pallet

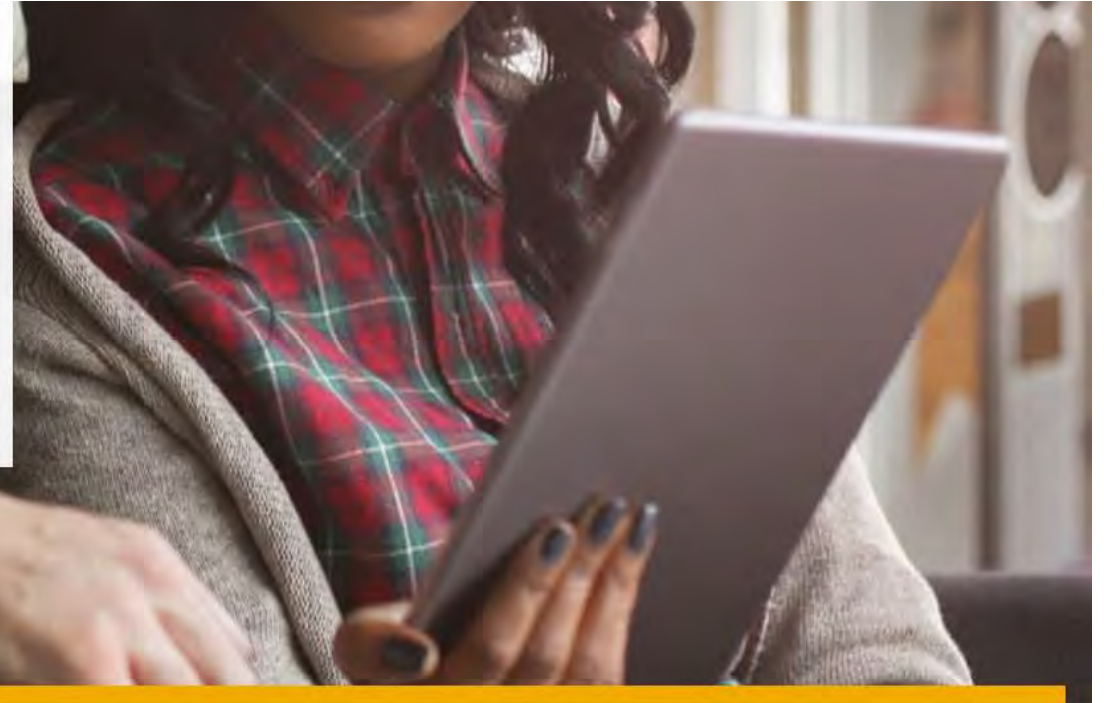
What are the implications of breaking down the pallet sooner?

SAP customers to migrate to SAP S/4HANA until end of 2027



Updated Policy Gives Customers More Time to Complete SAP S/4HANA Transition

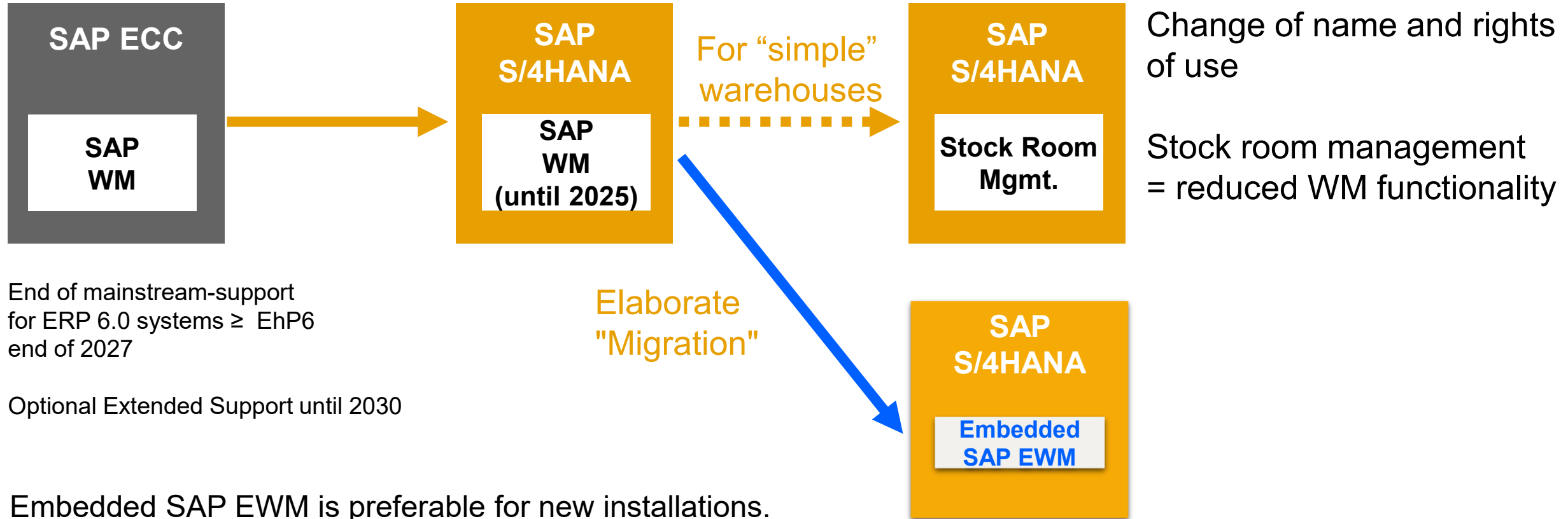
February 11, 2020 by Susan Galer



SAP recently announced a [maintenance availability commitment for SAP S/4HANA](#) until the end of 2040. At the same time, SAP extended the mainstream maintenance availability period for core applications of SAP Business Suite 7 until end of 2027, followed by optional extended maintenance until the end of 2030.



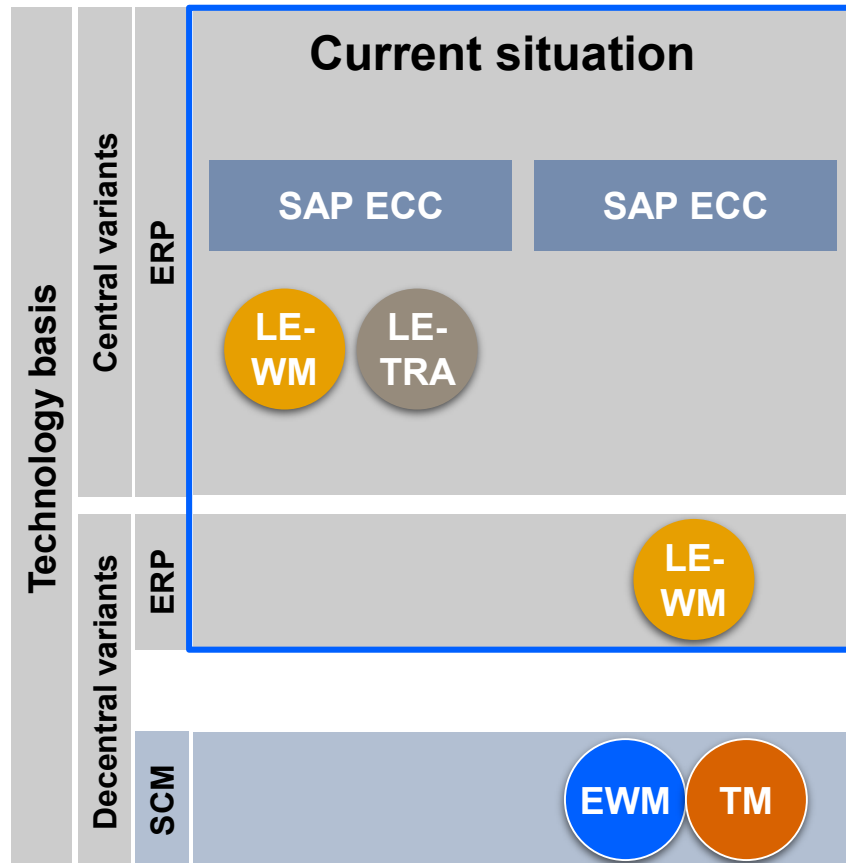
SAP WM will be still alive on SAP S/4HANA: Stock Room Management



End of mainstream-support
for ERP 6.0 systems ≥ EhP6
end of 2027

Optional Extended Support until 2030

Embedded SAP EWM is preferable for new installations.
New implementation of Stock Room Management still possible within the scope of the usage rights.



Functionality versus SAP EWM and SAP TM (excerpt)

SAP LE-WM

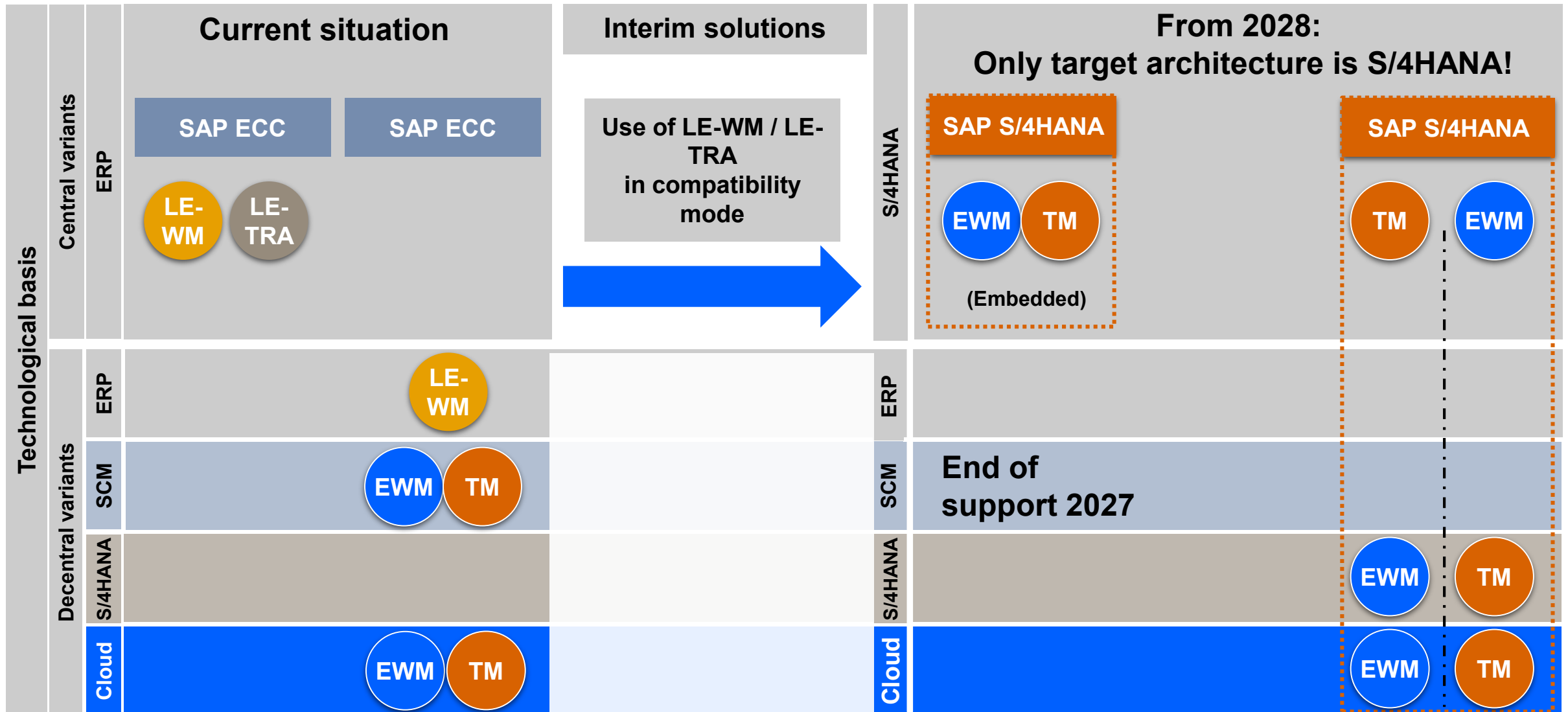
- No granular mapping of process steps - resulting in a lack of inventory transparency
- Unsuitable for automatic storage
- Rudimentary control rooms
- Restricted QM / QA integration (inspection lot decision after goods receipt posting)
- No cross-delivery packing / no mapping of nested HUs
- Not multi-customer capable
- Integration into transport management

SAP LE-TRA

- Planning on the basis of customer orders not possible
- No joint planning of inbound and outbound deliveries in one transport document
- No planning of third-party business
- No cross-company planning (multiple ERP systems)
- No supported planning (algorithms, map integration, ...)
- Integration into the warehouse

Corresponding functions are made available in SAP EWM and SAP TM
→ Best of Class solutions

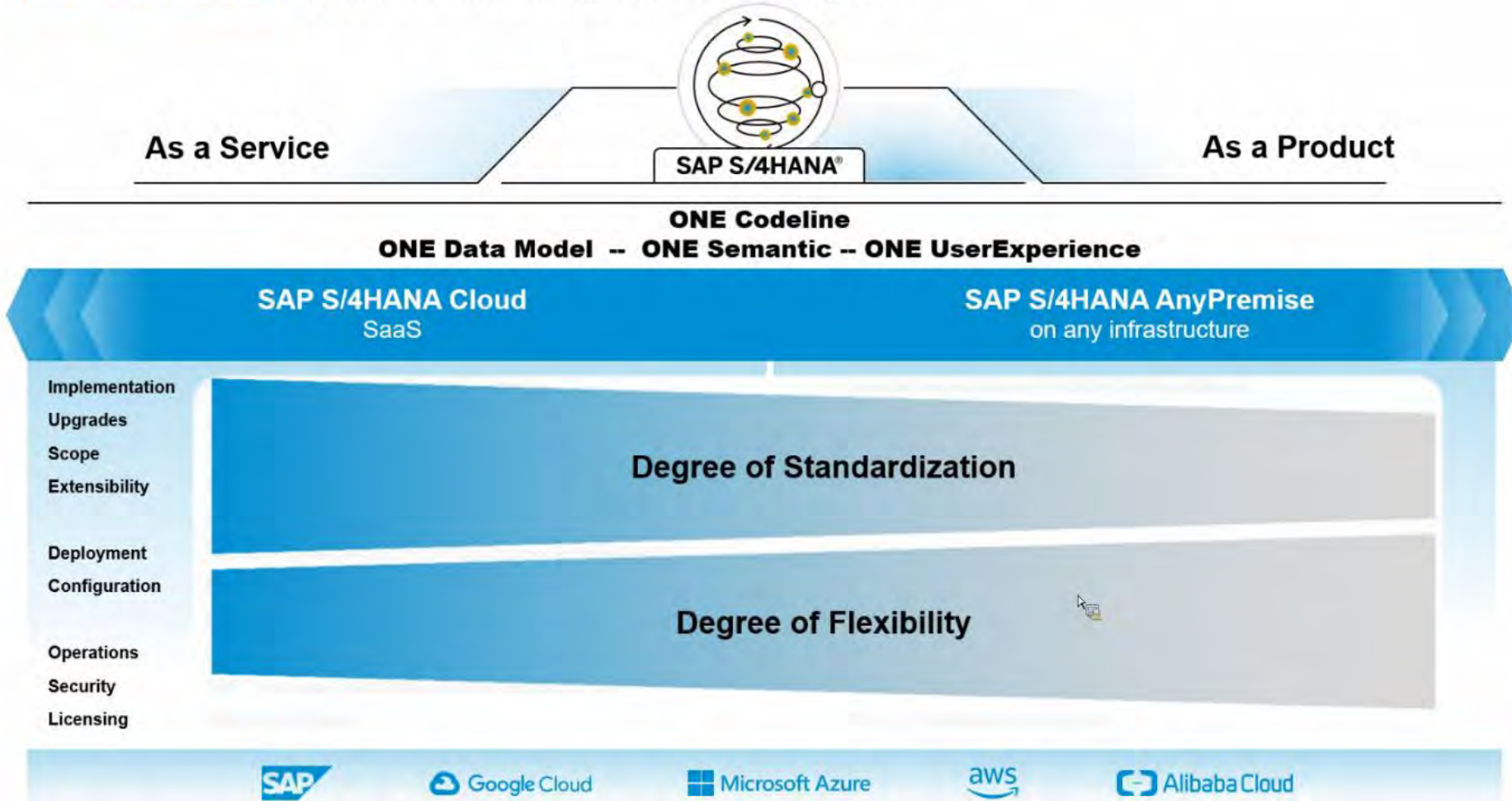
No “One Right Solution” – Multiple Migration scenarios



SAP solutions for the Digital Supply Chain Logistics - Deployment



SAP S/4HANA offers flexibility of consumption



Criteria for selecting the target architectures (technical criteria)



	Basic Notes	EWM	TM
Embedded in S/4HANA	<ul style="list-style-type: none"> Requires SAP S / 4HANA Suitable for requirements of low to medium complexity Scope of services: Basic and Extended 	Overarching criteria <ul style="list-style-type: none"> Independence from ERP (S/4HANA) release changes Risk assessment in the event of system failure Number of host systems (ERP systems) Scope of services (basic vs. extended) 	
Decentral on S/4HANA	<ul style="list-style-type: none"> Suitable for requirements of medium to high complexity Connection of several ERP systems possible Scope of services: Extended Deployment: On-Premise / SaaS 	EWM criteria <ul style="list-style-type: none"> Degree of automation Data volume / data throughput Response time behavior Organizational independence of the locations 	TM criteria <ul style="list-style-type: none"> Centralized planning Complexity in planning (rules and algorithms)
Decentral in private Cloud	<ul style="list-style-type: none"> Suitable for requirements of low to medium complexity Scope of services: Extended Also available as a public cloud * 		

Assumption: Complete performance in all variants

* Limited scope of services

Körber Supply Chain

Master Class Series

Any questions?

Today's Class:

Migrating from SAP WM to SAP EWM –
key considerations for your project



Next Supply Chain Master Class



SAP EWM in the Cloud – how to pick the best deployment option for your business

In this session, we will look beyond the functionality of SAP EWM and discuss how its different deployment options can make your SAP-based warehousing operations even more effective. Join us to learn about the differences between SAP's cloud deployment offerings, and the pros and cons of running SAP EWM in the cloud versus on-premises.

Contributor:

Thomas Gries | Chief Executive Officer of SAP Solutions at Körber Supply Chain